



*jordan fishwick*

2 Rydal Mews Manchester Road, SK9 2JH  
Guide Price £325,000



## Manchester Road Wilmslow SK9 2JH

Guide Price £325,000




NO CHAIN. A three bedroom townhouse with garage located within walking distance of Wilmslow. The property is conveniently situated within easy reach of Wilmslow town centre with its excellent range of shops and general services, restaurants and wine bars. For the commuter Wilmslow railway station is on the main line to London Euston and also provides a regular commuter service to Manchester and surrounding districts. Upon entering, the ground floor comprises an entrance hallway and a bedroom with access to a modern Ensuite. The first floor accommodation benefits from having a large living room and separate kitchen with modern fitted kitchen and several integrated appliances. Located on the second floor there are two further bedrooms and modern bathroom. The outside offers residents parking and a mature private garden space. The garage is ideal for extra storage. Viewings essential to fully appreciate.



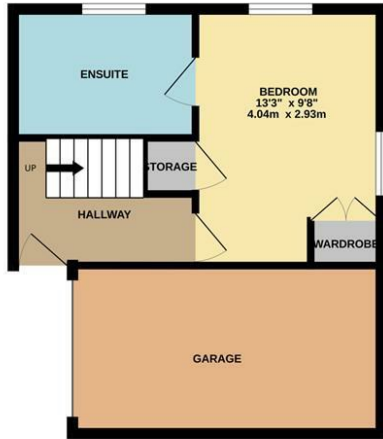
- No chain
- Three bedrooms
- Ensuite and Bathroom
- Accommodation over three floors
- Garage
- Small development
- Private Garden
- Large reception room



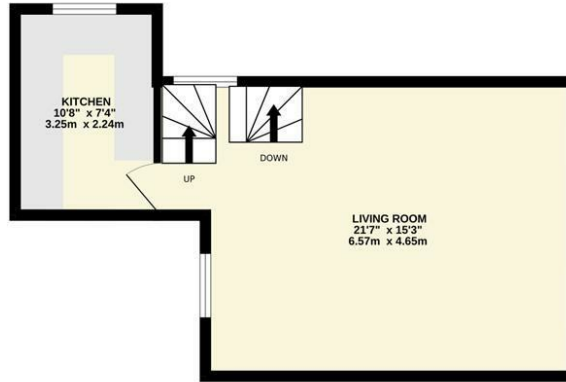
Energy Efficiency Rating		
	Current	Potential
Very energy efficient - lower running costs		
(92 plus) <b>A</b>		
(81-91) <b>B</b>		
(69-80) <b>C</b>		<b>76</b>
(55-68) <b>D</b>	<b>62</b>	
(39-54) <b>E</b>		
(21-38) <b>F</b>		
(1-20) <b>G</b>		
Not energy efficient - higher running costs		
<b>England &amp; Wales</b>	EU Directive 2002/91/EC 	



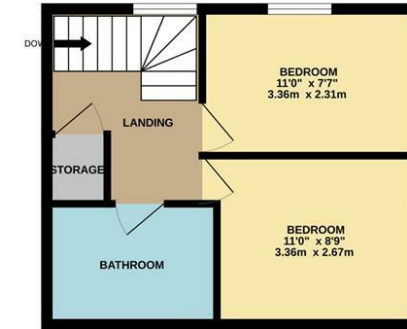
GROUND FLOOR



1ST FLOOR



2ND FLOOR



Measurements are approximate. Not to scale. Illustrative purposes only  
Made with Metropix ©2025



These particulars are believed to be accurate but they are not guaranteed and do not form a contract. Neither Jordan Fishwick nor the vendor or lessor accept any responsibility in respect of these particulars, which are not intended to be statements or representations of fact and any intending purchaser or lessee must satisfy himself by inspection or otherwise as to the correctness of each of the statements contained in these particulars. Any floorplans on this brochure are for illustrative purposes only and are not necessarily to scale.

Offices at: Chorlton, Didsbury, Disley, Hale, Glossop, Macclesfield, Manchester Deansgate, Manchester Whitworth Street, New Mills, Sale, Wilmslow and Withington

36-38 Alderley Road, Wilmslow SK91JX  
**01625 532000**

wilmslow@jordanfishwick.co.uk  
www.jordanfishwick.co.uk